

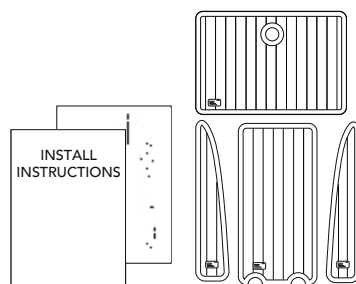


# HOW TO INSTALL LIKE A PRO



1

## Gather Supplies



### Product Package Contents

- Labeled panels
- Install instructions
- Install plan
- Unpacking, care, and storage page



### Needed Tools

- Acetone
- Masking tape
- Windex
- Utility knife (optional)
- Rag

2



Wipe down with acetone

3



Final wipe using an ammonia-based cleaner

4



Verify fit and exact location



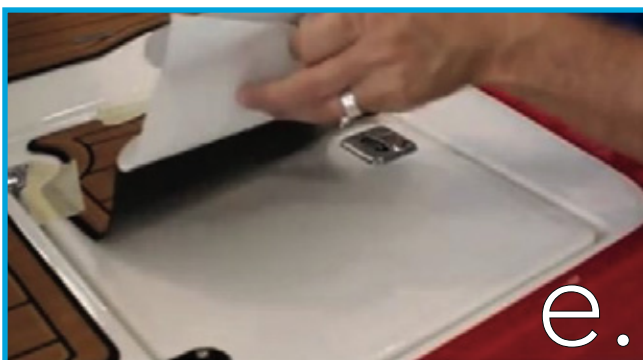
Scoreline down the center



Ensure line is completely cut and then fold back inward



Tape one side down in exact location



Lift opposing side and remove the liner



Apply downward pressure from the center working your way outward

5



Ensure the pad is firmly bonded

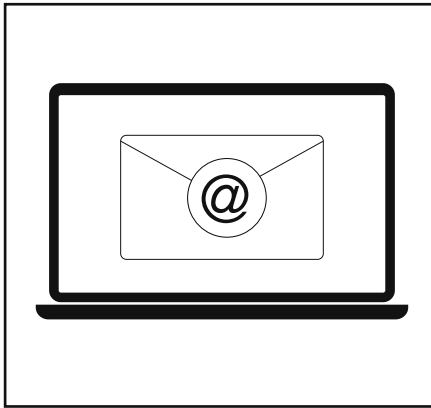


Repeat step 5e. on other side

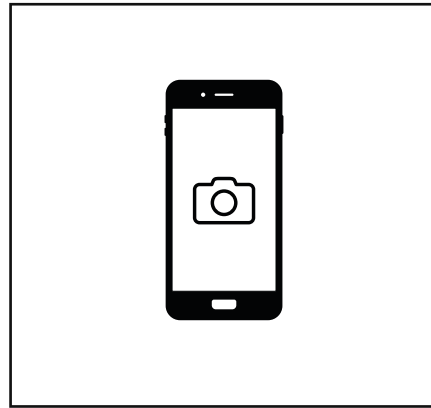


Repeat steps 5e-f

6



OR



### Questions and Concerns

If you have any questions or concerns arise during the installation of the product, feel free to contact us by phone or email. To help us to provide you with best customer service and answering your questions, we ask that you provide photographs of the area in question if all possible.

7

### Photos



### Showcase Your Project

We are proud to provide you with a quality marine product. If possible, photograph your finished install and e-mail your photos to us.

E-mail photos to  
[info@jettydek.ca](mailto:info@jettydek.ca)

Include your boat make and model number in e-mail's subject line.